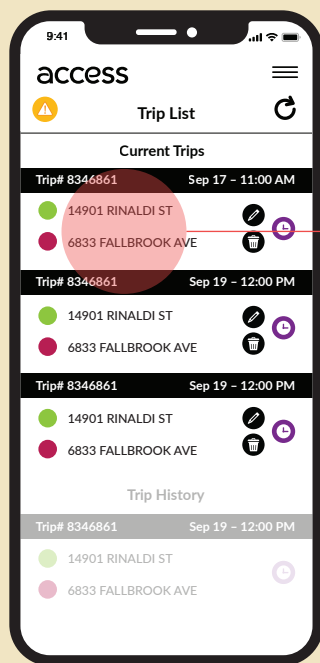


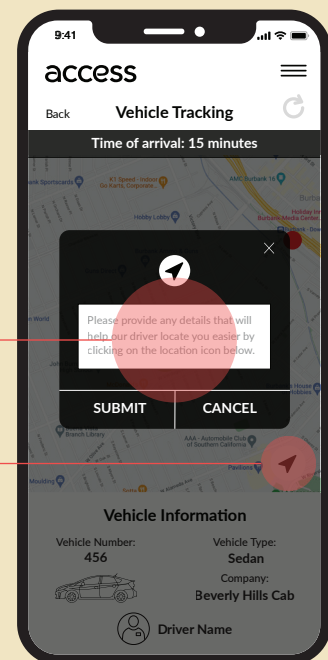
## Where's My Ride

# How to use the driver communication function



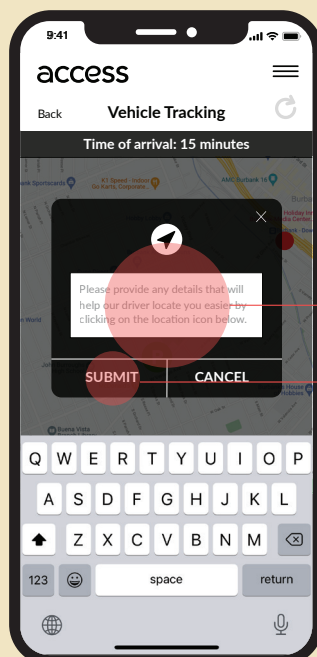
Tap on your trip to bring up the map view.

This feature is available **15 minutes** before the scheduled pick-up time.



Tap on the text area to bring up the virtual keyboard.

Tap on the pointer to bring up the dialogue box.



Type in the message you want to send to the driver.

Click "Submit" button to send the message and your location to the driver.