



## "Showcasing the Talents of People with Disabilities" Exhibitor Opportunities

Dear Community Partner & Potential Exhibitor,

Inclusion. Empowerment. Independence. These three words embody the mission and driving force behind agencies, companies and organizations, like yours, that seek to help people with disabilities live more independently. The 2014 CIL Broward ADA Expo: "Showcasing the Talents of People with Disabilities" is your opportunity to advance independent living for the more than 1.2 million individuals with disabilities residing in South Florida.

**When:** Saturday, July 12th and Sunday, July 13th, 2014

**Where:** Broward County Convention Center

**Total Expected Exhibitors:** 230 (Space is limited so sign up quickly)

Offering something for everyone, the 2014 CIL Broward ADA Expo will feature products, services, recreational sports, ground-breaking technology, talented artists, fashion show models and much more! As a trusted member of our community, we invite your organization to exhibit at this unparalleled event celebrating the anniversary of the American with Disabilities Act (ADA). Assisting individuals with disabilities to achieve their goals of independence and self-sufficiency has never been more important — or more achievable.

**Expo promotions include:**

- Three (3) media releases with guaranteed placement on more than 200 websites.
- Six (6) E-blasts, social media placement, direct mail, radio, local media coverage and expo website exposure.
- Visit [www.cilbrowardadaexpo.com](http://www.cilbrowardadaexpo.com) for full details on how you can benefit from our expo marketing campaign.

**All for a good cause** – Proceeds from this event will help CIL Broward, that has served over 100,000 people with disabilities since 1991, to continue its important mission: to assist people with disabilities in fulfilling their goals of independence and self-sufficiency.

To sign up today or for more information please complete the attached form and return it to:  
Betsy Earle, Show Manager: phone or fax at 888-414-1991, e-mail at [betsy@eventdrivensolutions.com](mailto:betsy@eventdrivensolutions.com).

We look forward to your partnership in bringing this blockbuster event to our community.

Thank you so much for your support!

Corey Hinds, Executive Director  
Center for Independent Living of Broward

Craig Lilienthal, Board President  
Center for Independent Living of Broward



2014 CIL Broward ADA Expo  
July 12th and 13th, 2014  
Broward County Convention Center, Halls A & B

Exhibitor Contract  
Deadline for Submission: April 30, 2014



**EXHIBITOR INFORMATION**

Contact Person: \_\_\_\_\_  
Title: \_\_\_\_\_  
Exhibiting Company Name: \_\_\_\_\_  
Address: \_\_\_\_\_  
City: \_\_\_\_\_ State: \_\_\_\_ Zip: \_\_\_\_\_  
Telephone, please include area code: ( \_\_\_\_ ) \_\_\_\_ - \_\_\_\_\_  
Emergency/Cell Number: ( \_\_\_\_ ) \_\_\_\_\_  
Fax please include area code: ( \_\_\_\_ ) \_\_\_\_ - \_\_\_\_\_  
E-Mail: \_\_\_\_\_  
Website: \_\_\_\_\_  
Second Contact: \_\_\_\_\_  
Second Contact Email: \_\_\_\_\_  
Twitter Handle: \_\_\_\_\_

**BOOTH SELECTION:**

Please indicate your booth size and enter price:  
\_\_\_ Standard booth (10'x10') (\$560)..... = \$ \_\_\_\_\_  
\_\_\_ 10'x10' booth with an open corner (\$635).. = \$ \_\_\_\_\_  
\_\_\_ 10'x20' booth (\$1,120) ..... = \$ \_\_\_\_\_  
\_\_\_ Additional corners (\$75 each)..... = \$ \_\_\_\_\_  
\_\_\_ Island booth (20'x20') (\$2,540)..... = \$ \_\_\_\_\_  
  
Total Booth Fee ..... = \$ \_\_\_\_\_

**BOOTH PREFERENCES:**

\_\_\_\_\_ (1st choice)  
\_\_\_\_\_ (2nd choice)

Do you need a booth size not listed in the choices above?  
Yes \_\_\_\_\_ No \_\_\_\_\_  
If yes, please call Betsy at (888) 414-1991.

We do not want to be adjacent to or across the aisle from: \_\_\_\_\_  
(Every effort will be made to accommodate your request)

**100% of Booth Fee, in U.S. dollars due with contract.**  
No refunds will be made after April 1, 2014. Companies who have paid in full by April 30th, 2013 will be included in the Official Show Guide.

Would you like to be contacted about sponsorship opportunities? Yes \_\_\_\_\_ No \_\_\_\_\_

Sponsorship opportunities are listed at <http://www.cilbrowardadaexpo.com/sponsorships>

**PAYMENT OPTIONS:**

To pay by credit card, please complete the following information on this form and email to [betsy@eventdrivensolutions.com](mailto:betsy@eventdrivensolutions.com):

Please charge my:  Visa  MasterCard  Amex  
Card Number: \_\_\_\_\_  
Security Code: \_\_\_\_\_ Exp. Date: \_\_\_\_\_  
Name: \_\_\_\_\_  
Billing Address: \_\_\_\_\_  
City: \_\_\_\_\_ State: \_\_\_\_ Zip: \_\_\_\_\_

Signature: \_\_\_\_\_

To pay online, please submit this document to Betsy at [betsy@eventdrivensolutions.com](mailto:betsy@eventdrivensolutions.com) or fax to at toll free 1 (888) 414-1991, and visit us on the web at <http://www.cilbrowardexpo.com/exhibitors> for details on online payment submission. You will receive a confirmation within 5 business days of receipt of your contract.

To pay by check, please mail the check accompanied with a copy of this form to:  
CIL Broward  
Attn: Corey Hinds  
4800 N. State Road 7, Suite 102  
Fort Lauderdale, FL 33319

**NOTE: For exhibits over \$2,000.00, please contact Betsy at 1 (888) 414-1991.**

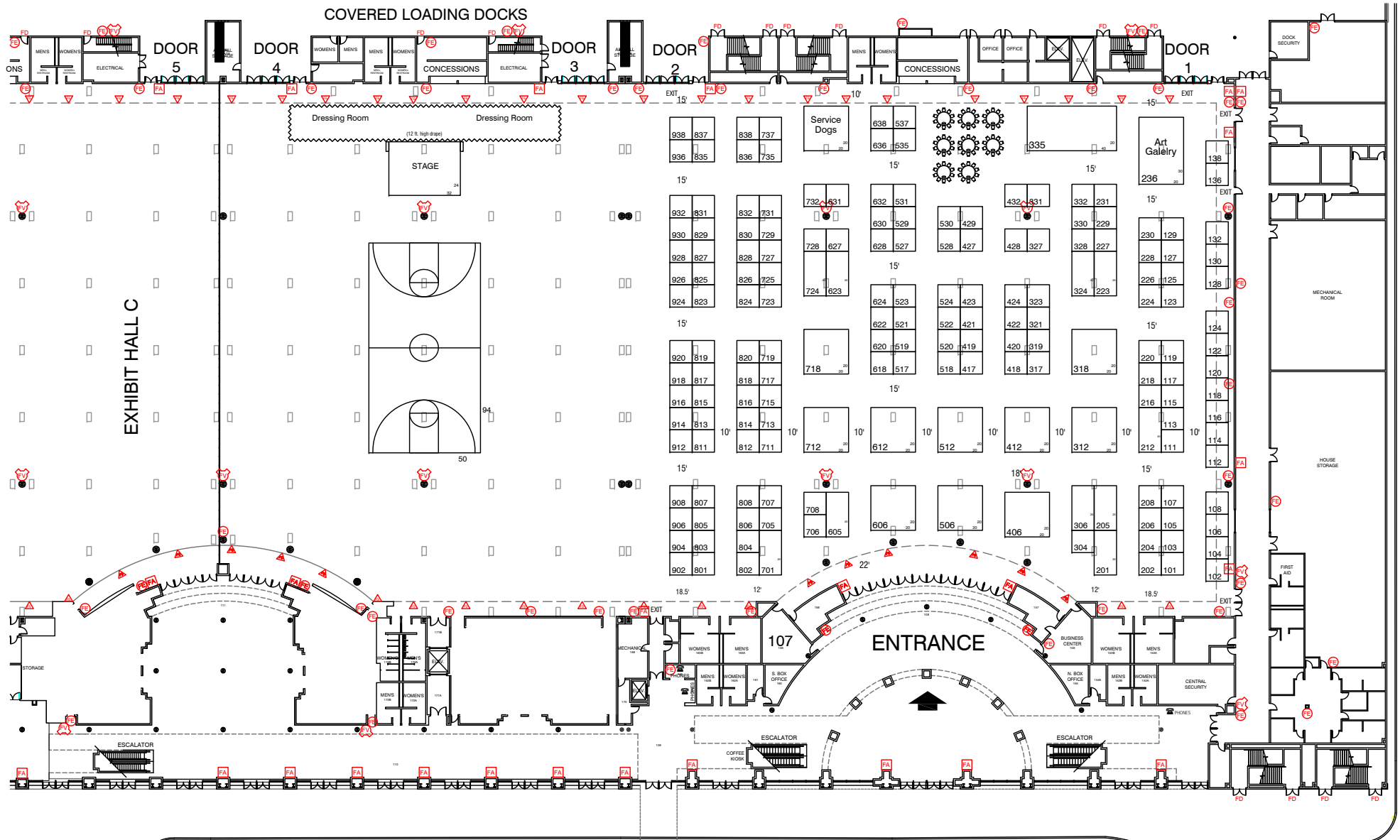
**FOOD & BEVERAGE SAMPLING:**

Will you be sampling food or beverage?  
Yes \_\_\_\_\_ No \_\_\_\_\_

If yes, please keep an eye out for food and beverage sampling forms in the Exhibitor Kit.

For more information or for questions, contact Betsy Earle, Event Driven Solutions, at (888) 414-1991 or at [Betsy@eventdrivensolutions.com](mailto:Betsy@eventdrivensolutions.com)

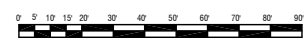
# Greater Fort Lauderdale - Broward County Convention Center, Halls A & B Fort Lauderdale, Florida



Block.....	Count
20x20.....	11
10x20.....	10
40x20.....	1
20x30.....	1
10x10.....	157

**Halls A & B**  
 235-10x10 booth equiv.  
 24x32 stage, 50x94 court  
 Ceiling Height 30'  
 Aisle widths as noted

FIRE LEGEND	
FA	FIRE ALARM PULL STATION
FD	FIRE DOOR
FE	FIRE EXTINGUISHER
FS	FIRE SENSOR
FV	FIRE VALVE
	10' x 10' UPON BUILDING MANAGEMENT APPROVAL
	ELECTRICAL FLOOR PLATE
	COLUMN (SIZE VARIES)
	PERIMETER CEILING HEIGHT IS 16 FT.



Rev. 2/06/14

