

# 2045 Transportation Plan

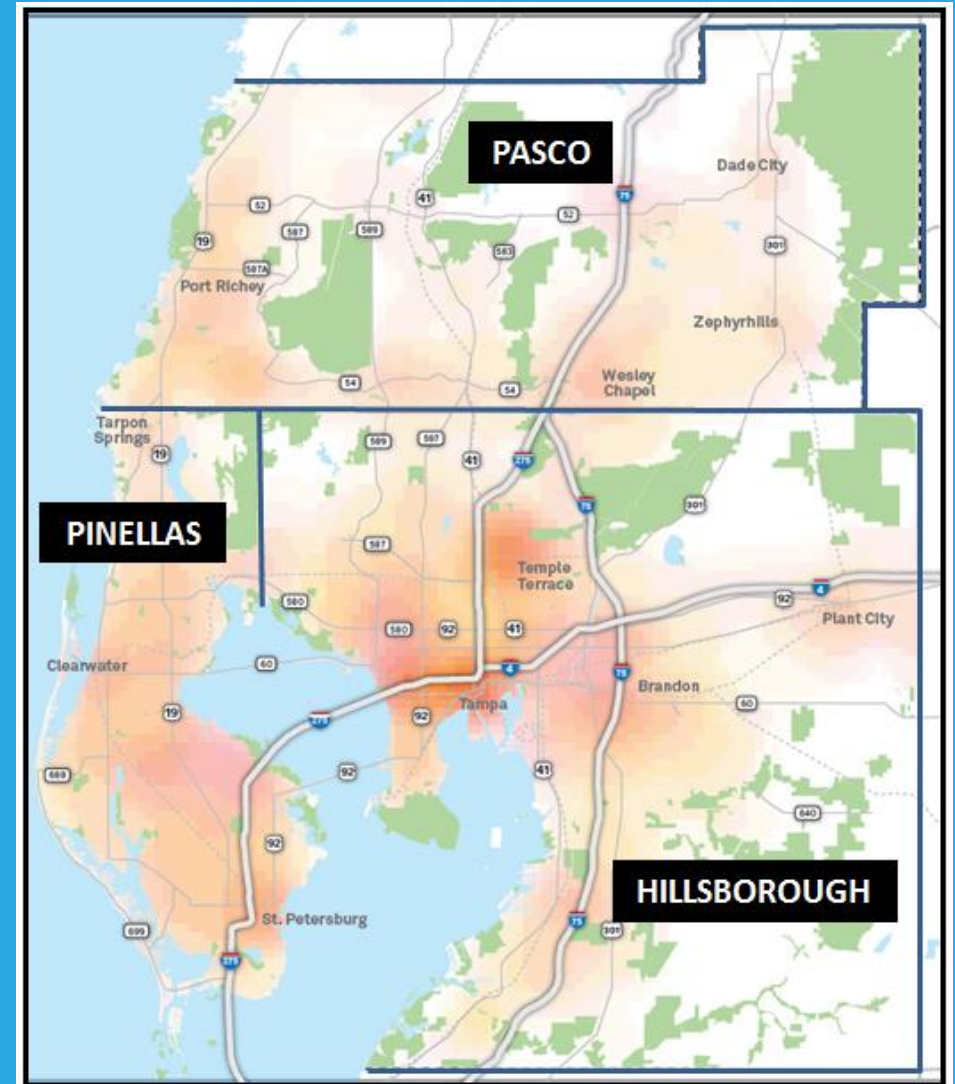


## We Want to Hear from You!



# Our Study Area

- Hillsborough, Pinellas and Pasco Counties
  - 2.8 million residents
- We have a great place to live, work and play – let's keep it great!



# We Need Your Input!

- The 3 counties are expecting 1,000,000 more residents by 2045
- Help us plan for this growth



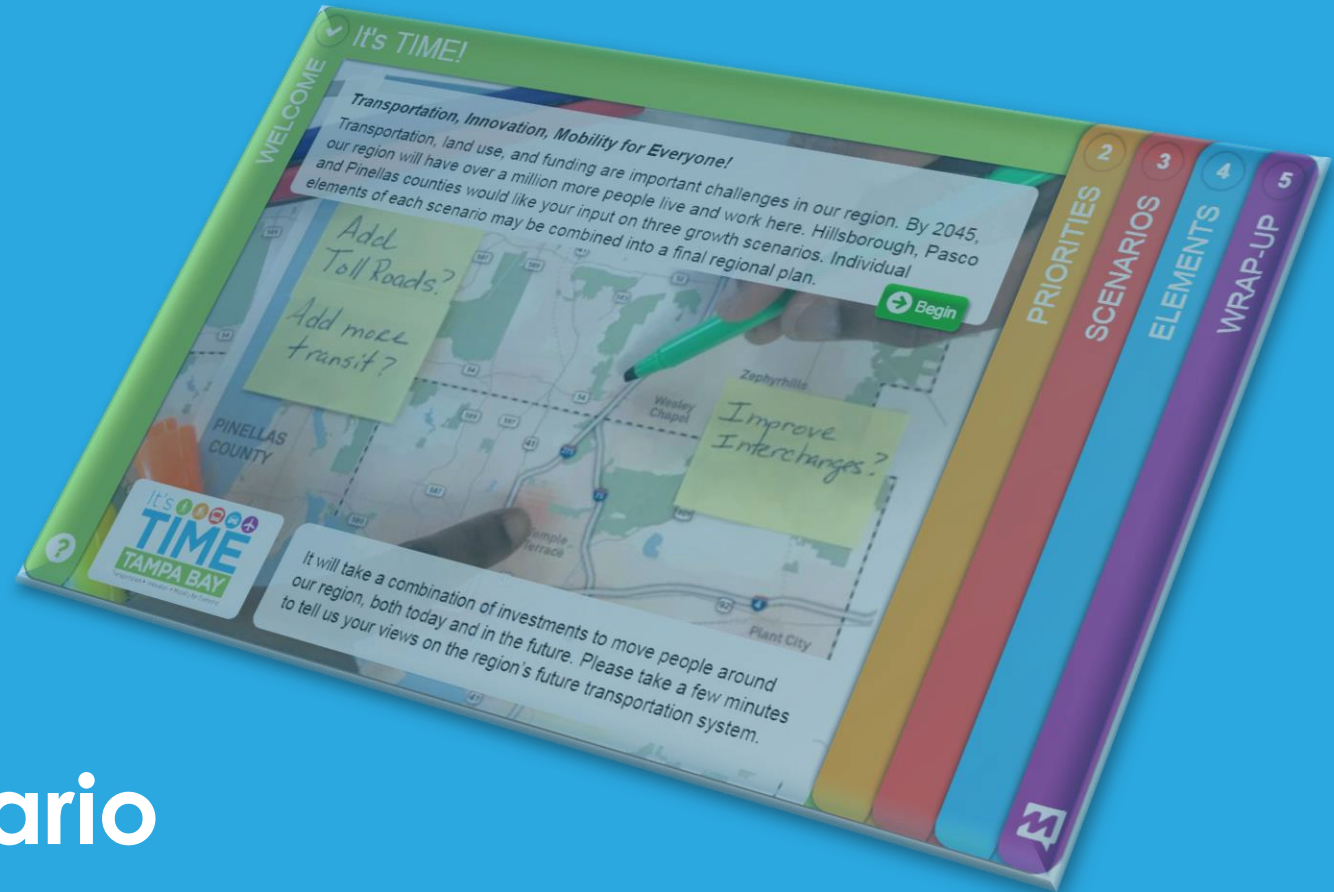
# Transportation, Innovation, Mobility



- It will take a combination of investments to move people around our region, both today and in the future
- How will we move around our communities and better connect our counties?

# Now It's Your Turn!

- State your priorities
- Consider future year scenarios
- Identify the best elements of each to create a hybrid scenario



# Let's get Started!

## Two ways to participate

- You can take the survey online at:

[ItsTimeTampaBay.org](https://ItsTimeTampaBay.org)

*When you see  
this on a slide*

- Or, follow this guided presentation and fill out your responses on your questionnaire

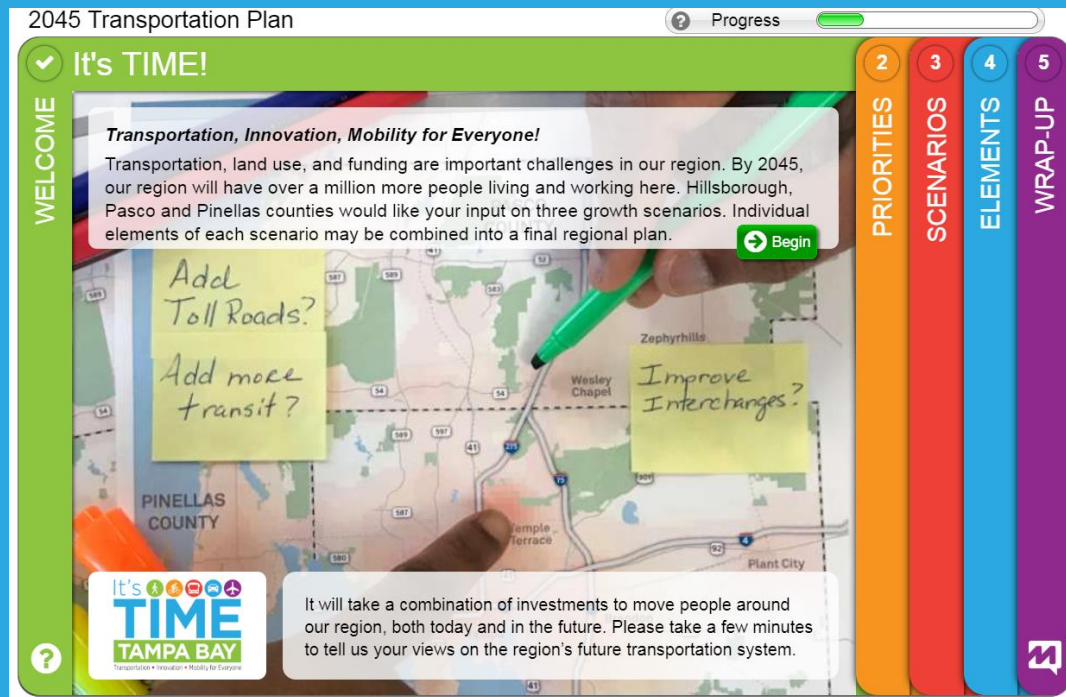


# It's Time to Vote!

# 1. WELCOME

If you are completing  
the **online survey**,  
you should be on this screen

If you are completing  
the **paper survey**,  
you should be at this section



It's   
**TIME**  
**TAMPA BAY**  
Transportation • Innovation • Mobility for Everyone

## 2045 TRANSPORTATION PLAN

Transportation, land use, and funding are important challenges in our region. By 2045, our region will have over a million more people live and work here. Hillsborough, Pasco and Pinellas counties would like your input on three growth scenarios. Individual elements of each scenario may be combined into a final regional plan.

*Instructions: Follow the presentation for additional information and fill-in each section of your survey when instructed to do so.*

# 2. PRIORITIES

If you are completing the **online survey**, you should be on screen 2

If you are completing the **paper survey**, you should be at section 2



2045 Transportation Plan

Progress

2 What is important to you?

What to do Next Task

WELCOME

PRIORITIES

SCENARIOS

ELEMENTS

WRAP-UP

Drag your top 5 items above this line

- Open/Green Spaces
- Equal Opportunity
- Storm Vulnerability
- Alternatives to Driving
- Traffic Jams**
- Shorter Commutes
- Public Service Costs

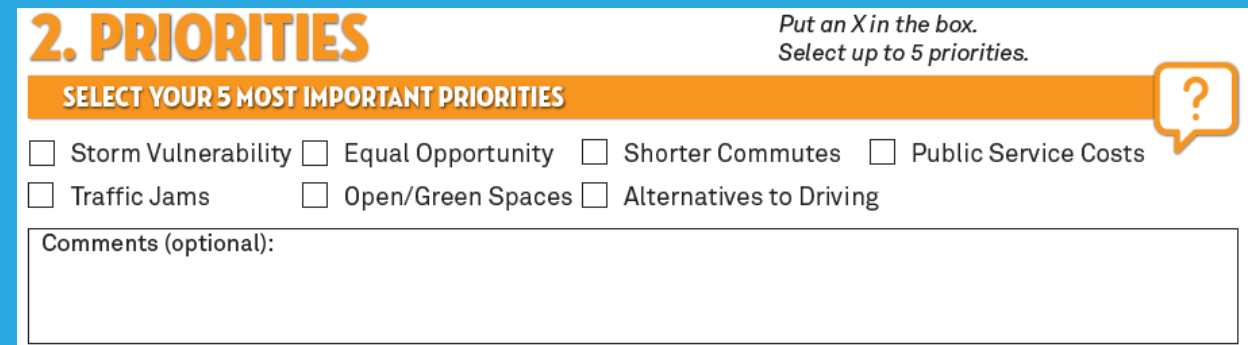
**Traffic Jams**



Reduce amount of time spent sitting in traffic on a typical weekday, which affects productivity, family time, air quality, noise, and other factors

Comment

Suggest another



**2. PRIORITIES**

Put an X in the box.  
Select up to 5 priorities.

**SELECT YOUR 5 MOST IMPORTANT PRIORITIES**

- Storm Vulnerability
- Equal Opportunity
- Shorter Commutes
- Public Service Costs
- Traffic Jams
- Open/Green Spaces
- Alternatives to Driving

Comments (optional):



# What's Important to You?

## Consider these priorities



**Storm  
Vulnerability**



**Traffic  
Jams**



**Open/Green  
Spaces**



**Alternatives to  
Driving**



**Equal  
Opportunity**



**Shorter  
Commutes**



**Public Service  
Costs**

# Priorities



## Storm Vulnerability

- Minimize the number of people and jobs located in hurricane evacuation zones



## Traffic Jams

- Reduce amount of time spent sitting in traffic on a typical weekday, which affects productivity, family time, air quality, noise, and other factors



## Open/Green Spaces

- Protect undeveloped lands, including wetlands and wildlife areas



## Alternatives to Driving

- Expand opportunities for walking, biking, buses and rail, carpooling and water ferries

# Priorities (continued)



## Shorter Commutes

- Keep the economy moving by shortening commutes so people have access to jobs, and businesses have access to workers



## Equal Opportunity

- Improve access to jobs and life-sustaining services for underserved communities



## Public Service Costs

- Efficiently manage growth to reduce the costs of building and maintaining new water supply lines, sewers, and local roads

# Time to Vote!

## What to do on your survey

### Example Only

## 2. PRIORITIES

Put an X in the box.  
Select up to 5 priorities.

### SELECT YOUR 5 MOST IMPORTANT PRIORITIES



- Storm Vulnerability    Equal Opportunity    Shorter Commutes    Public Service Costs  
 Traffic Jams    Open/Green Spaces    Alternatives to Driving

Comments (optional):

**Enter comments on the priorities if you wish...**

# Select Your Top 5 Priorities



**Storm  
Vulnerability**



**Traffic  
Jams**



**Open/Green  
Spaces**



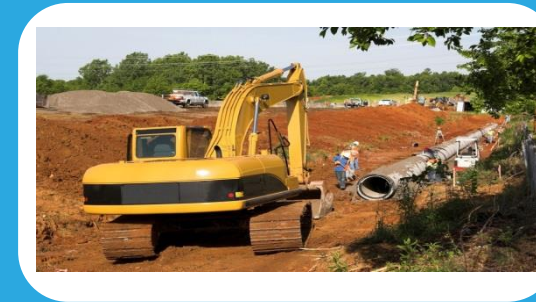
**Alternatives to  
Driving**



**Equal  
Opportunity**



**Shorter  
Commutes**



**Public Service  
Costs**

# 3. SCENARIOS

If you are completing the **online survey**, you should be on screen 3

If you are completing the **paper survey**, you should be at section 3

2045 Transportation Plan Progress

3 How should we grow? What to do Next Task

Scenario A Scenario B Scenario C

**Scenario A**  
Imagine a future where we primarily invest in **NEW TECHNOLOGIES** and a few roadway projects to manage traffic flow. Click on **Show Map** to view scenario.

Rate your reaction to this scenario:  
★ ★ ★ ★ ★  
Optional Comment

No priorities selected, at random:

- Open/Green Spaces
- Equal Opportunity
- Storm Vulnerability
- Alternatives to Driving
- Traffic Jams

By 2045, Worse than today ← → By 2045, Better than today

DRIVERLESS CARS  
RAPID BUS SERVICE

WELCOME PRIORITIES SCENARIOS ELEMENTS WRAP-UP

### 3. SCENARIOS

**SCENARIO A** Rate this Scenario: 1 2 3 4 5  
Least Appealing Most Appealing

Imagine a future where we primarily invest in **NEW TECHNOLOGIES** and a few roadway projects to manage traffic flow.

What do you like?

What do you dislike?

**SCENARIO B** Rate this Scenario: 1 2 3 4 5  
Least Appealing Most Appealing

Imagine a future where we primarily invest in **EXPRESSWAY LANES** forming an outer loop so traffic does not have to go through the congested center of the region.

What do you like?

What do you dislike?

**SCENARIO C** Rate this Scenario: 1 2 3 4 5  
Least Appealing Most Appealing

Imagine a future where we primarily invest in **BUS AND RAIL SERVICES** connecting, revitalizing and in-filling the communities that exist today.

What do you like?

What do you dislike?

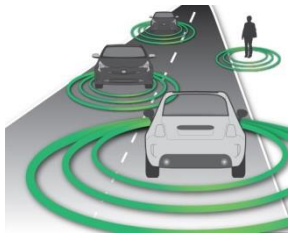
DRIVERLESS CARS  
RAPID BUS ON SHOULDER  
EXPRESSWAY LANES  
TOLLED EXPRESS LANES  
BUS AND RAIL SERVICES  
STATEWIDE RAIL  
WATER FERRY  
RAPID BUS

# How Should We Grow?

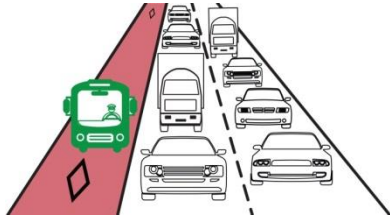
- Consider 3 high level, exaggerated scenarios
  - Rate your initial reaction using a score of 1-5
- Help create a **hybrid 2045 scenario**, based on the best pieces of the strategies



# Exaggerated Scenarios



DRIVERLESS CARS



RAPID BUS ON SHOULDERS

## Scenario A

Imagine a future where we primarily invest in **NEW TECHNOLOGIES** and a few roadway projects to manage traffic flow



TOLLED EXPRESS LANES



I-275 CONVERTED TO BOULEVARD

## Scenario B

Imagine a future where we primarily invest in **EXPRESSWAY LANES** forming an outer loop so traffic can avoid the congested center of the region



REGIONAL & STATEWIDE RAIL



RAPID BUS



WATER FERRY

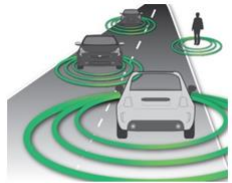
## Scenario C

Imagine a future where we primarily invest in **BUS AND RAIL SERVICES** connecting, revitalizing and in-filling the communities that exist today



# Building the Hybrid

## Best elements of each scenario



**DRIVERLESS CARS**



**RAPID BUS ON SHOULDERS**

### Scenario A



**TOLLED EXPRESS LANES**



### Scenario B



**REGIONAL & STATEWIDE RAIL**



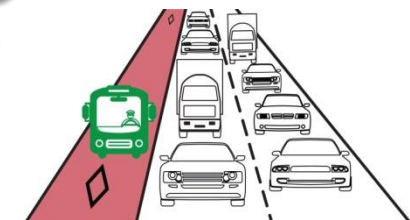
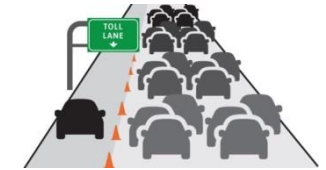
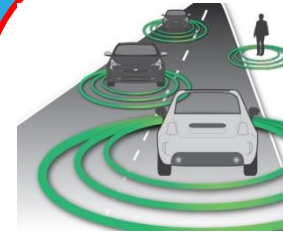
**WATER FERRY**



**RAPID BUS**

### Scenario C

## Hybrid Scenario



# Time to Vote!

## What to do on your survey

### Example Only

## 3. SCENARIOS

### SCENARIO A

Rate this Scenario:



Least  
Appealing

Most  
Appealing

Imagine a future where we primarily invest in **NEW TECHNOLOGIES** and a few roadway projects to manage traffic flow.



DRIVERLESS CARS



RAPID BUS ON SHOULDERS

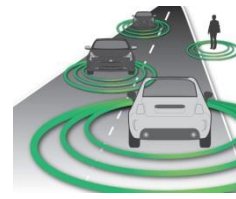
What do you like?

**Enter comments here....**

What do you dislike?

**Enter comments here....**

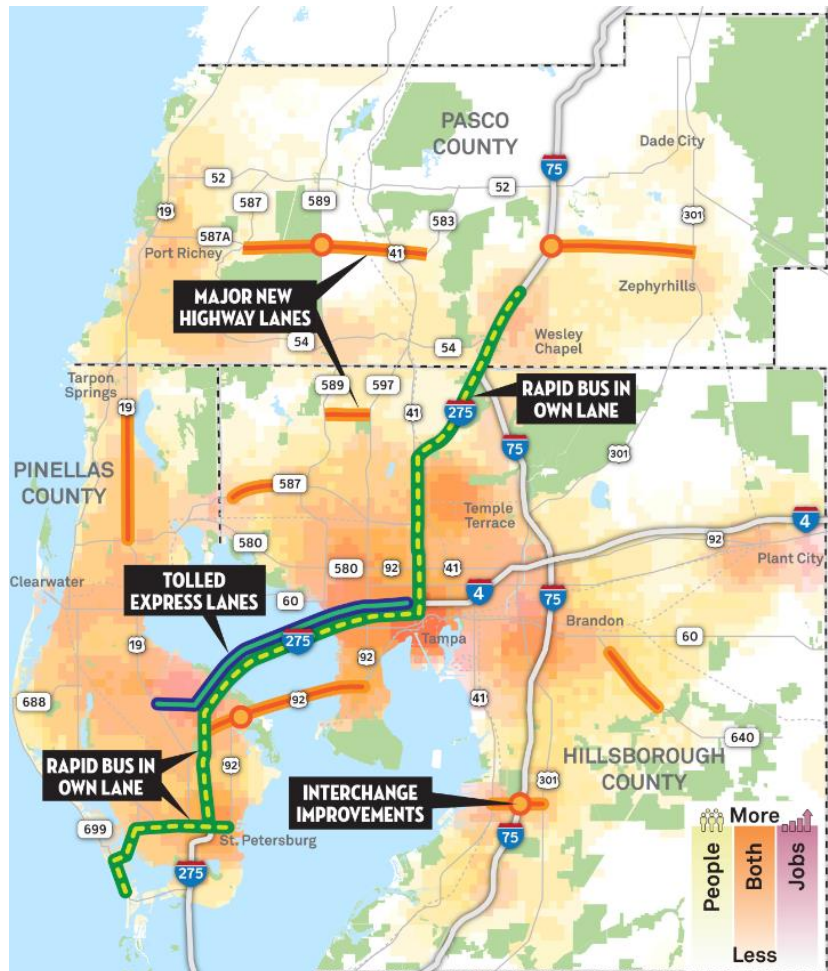
# Scenario A Technology Focus



DRIVERLESS CARS



RAPID BUS ON SHOULDERS



- Investments in new technologies & driverless cars ease long commutes
- Regional rapid buses on I-275 shoulders bypass traffic
- Select roadway projects help improve local and regional connectivity
- Pinellas redevelops while Hillsborough and Pasco grow in suburbs and rural areas

# Rate Scenario A Technology Focus



DRIVERLESS CARS



RAPID BUS ON SHOULDERS



## Results on priorities:

**By 2045, Worse than Today**

**By 2045, Better than Today**

Storm Vulnerability



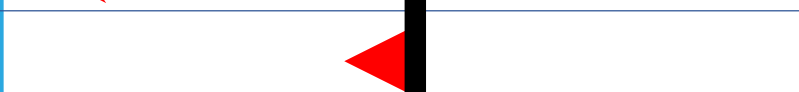
Traffic Jams



Open/Green Space



Alternatives to Driving



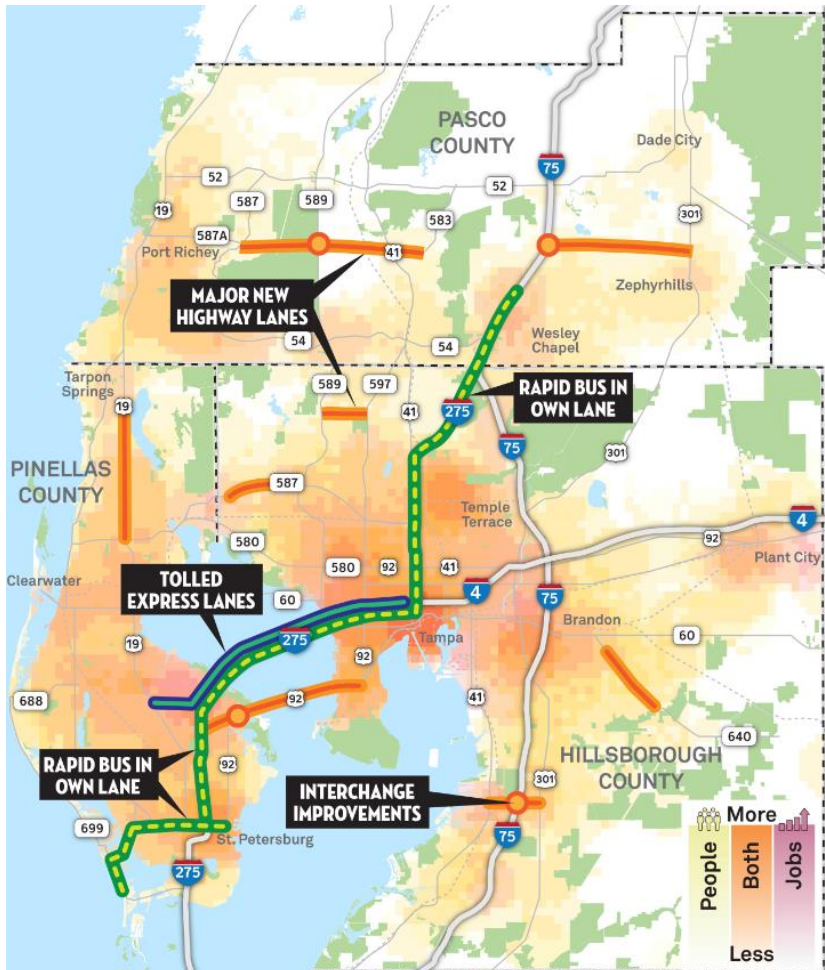
Equal Opportunity



Shorter Commutes

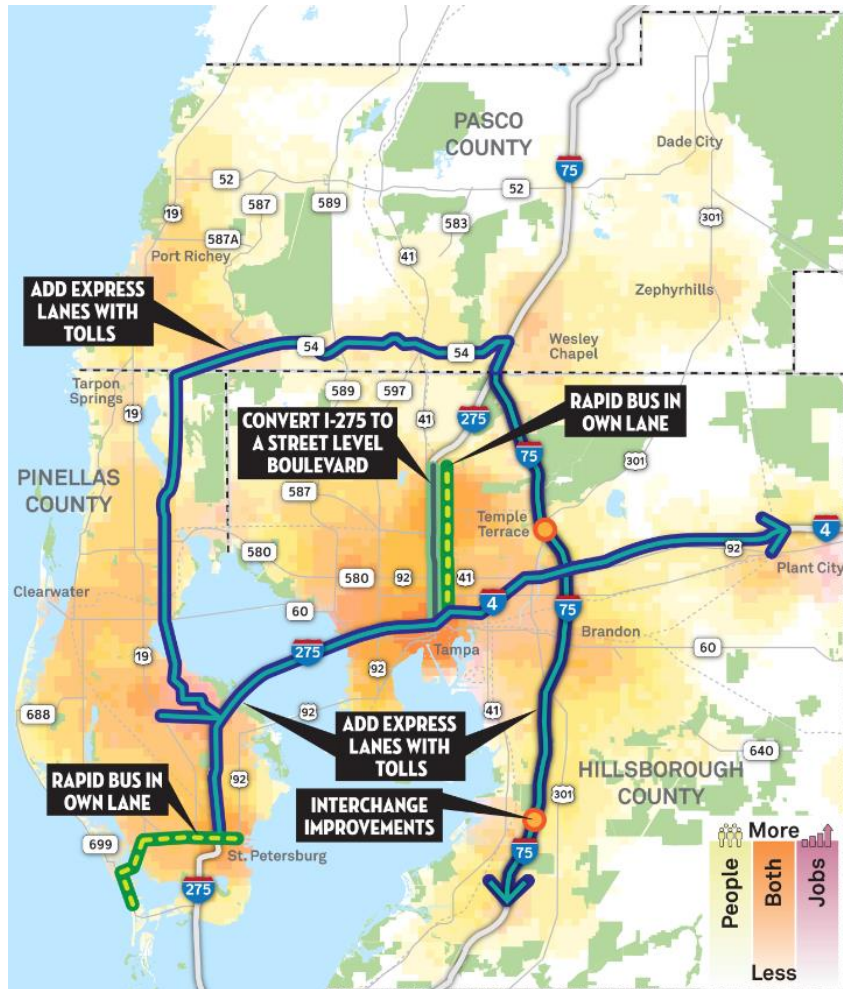
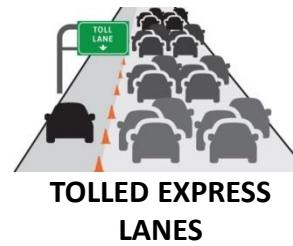


Public Service Costs



# Scenario B

## Expressway Focus



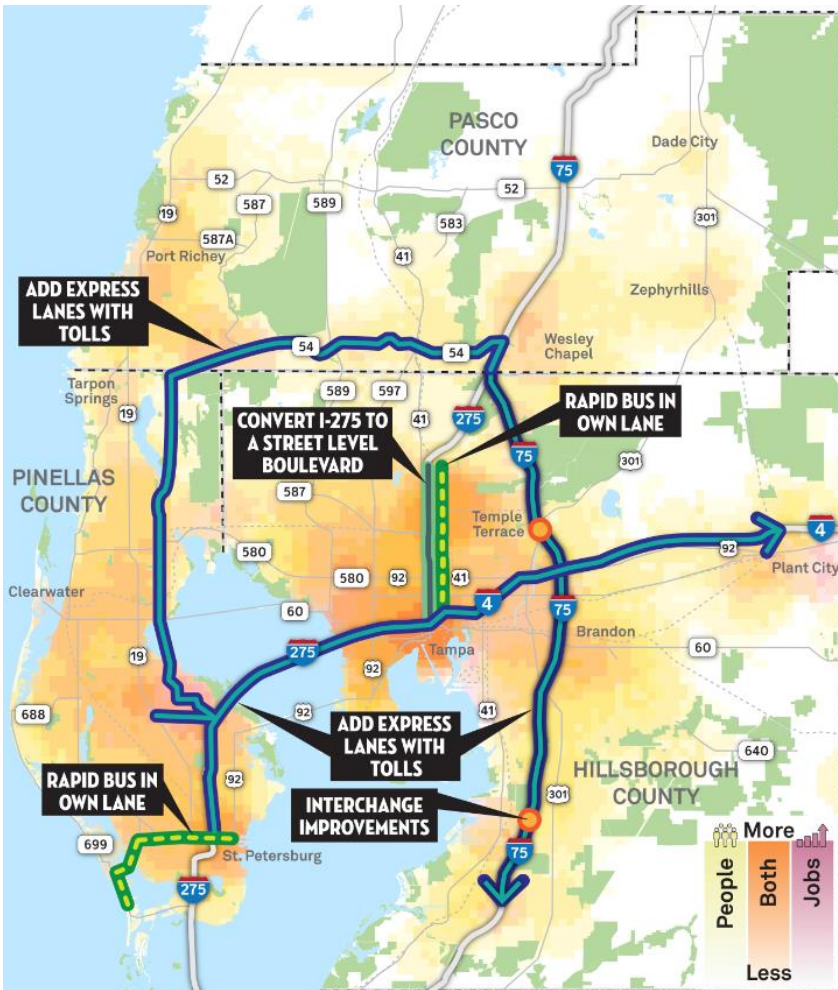
- New tolled express lanes create a loop linking the three counties
  - SR 54 (Pasco) to McMullen-Booth Road (Pinellas) to Howard Frankland Bridge to downtown Tampa (Hillsborough)
- North of downtown Tampa, I-275 converted to street-level boulevard.
- Growth focused near expressway interchanges with some urban redevelopment

# Rate Scenario B Expressway Focus



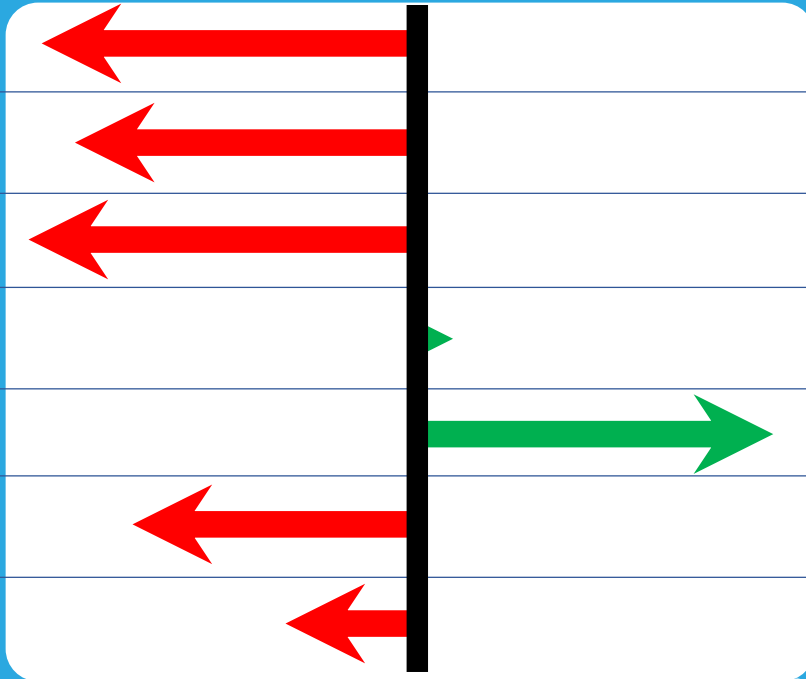
Rate this Scenario: **1** **2** **3** **4** **5**

Least Appealing Most Appealing

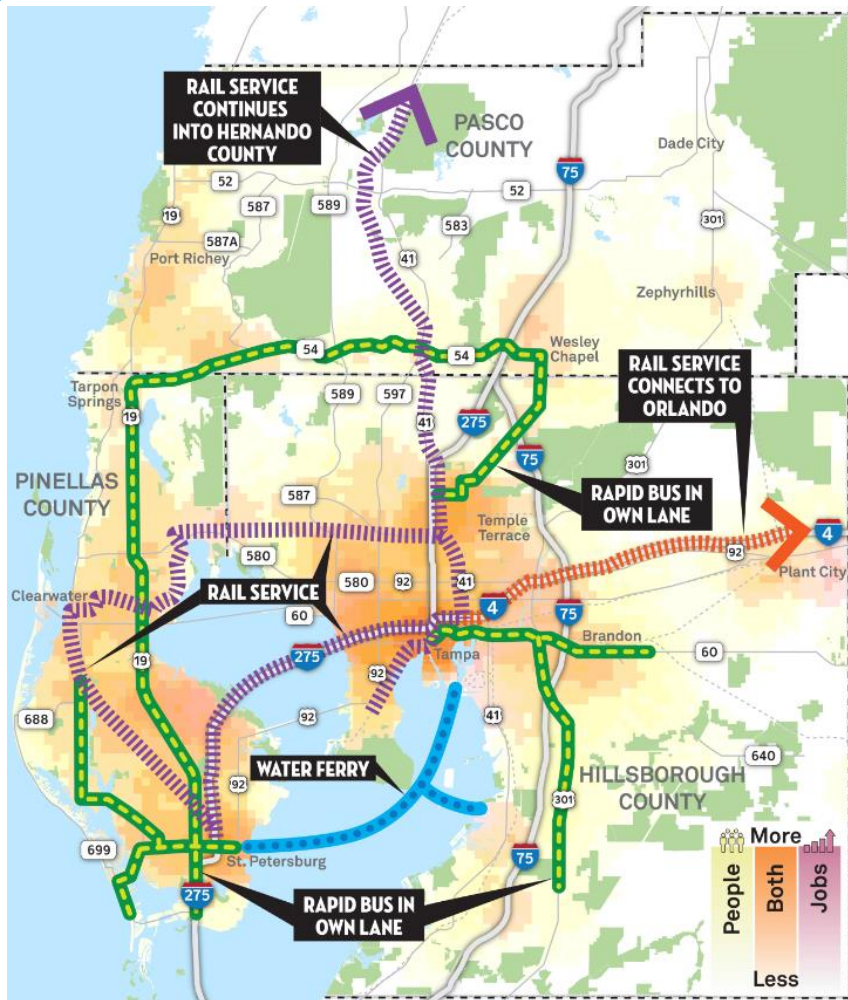
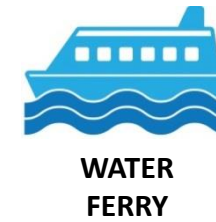


Results on priorities: By 2045, Worse than Today | By 2045, Better than Today

- Storm Vulnerability
- Traffic Jams
- Open/Green Space
- Alternatives to Driving
- Equal Opportunity
- Shorter Commutes
- Public Service Costs



# Scenario C Transit Focus



- Significant bus and rail investments encourage redevelopment of housing and businesses in our cities & towns
- Rail service on existing train tracks connects the three counties and rapid bus service found on most major roads
- Rail service connects the region to Orlando
- Water ferry service connects Tampa and St. Petersburg, and MacDill AFB and South Hillsborough

# Rate Scenario C

## Transit Focus



Results on priorities:

By 2045, Worse than Today

By 2045, Better than Today

Storm Vulnerability

Traffic Jams

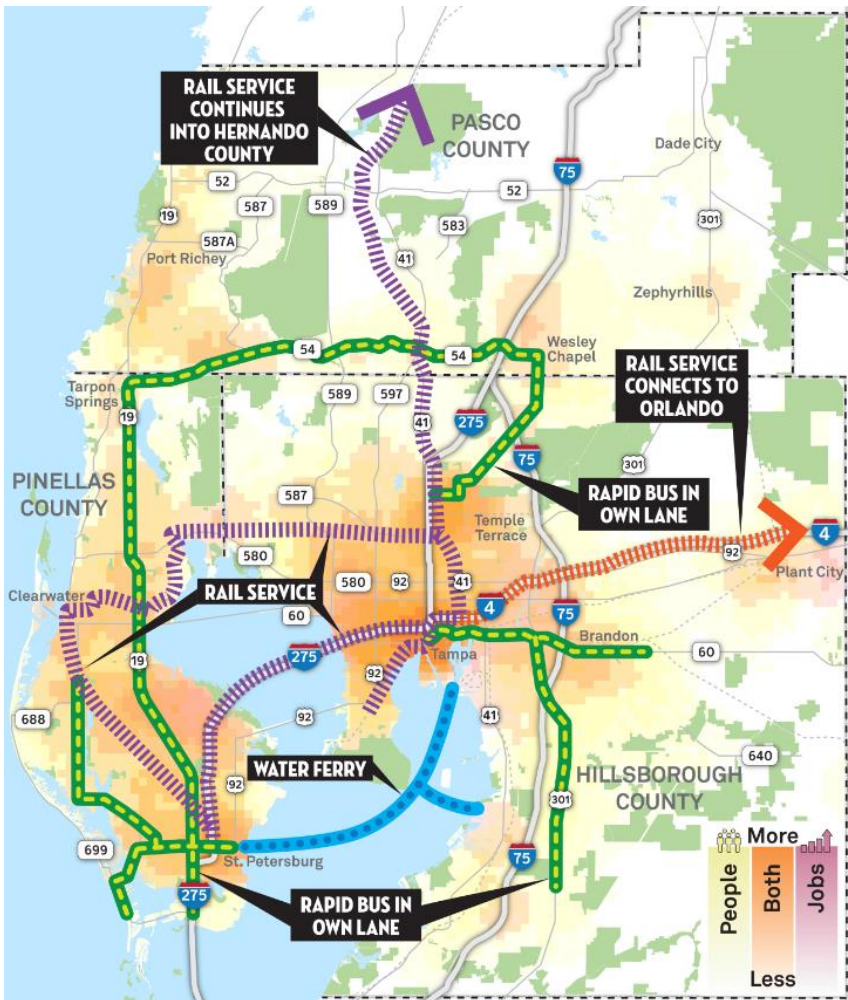
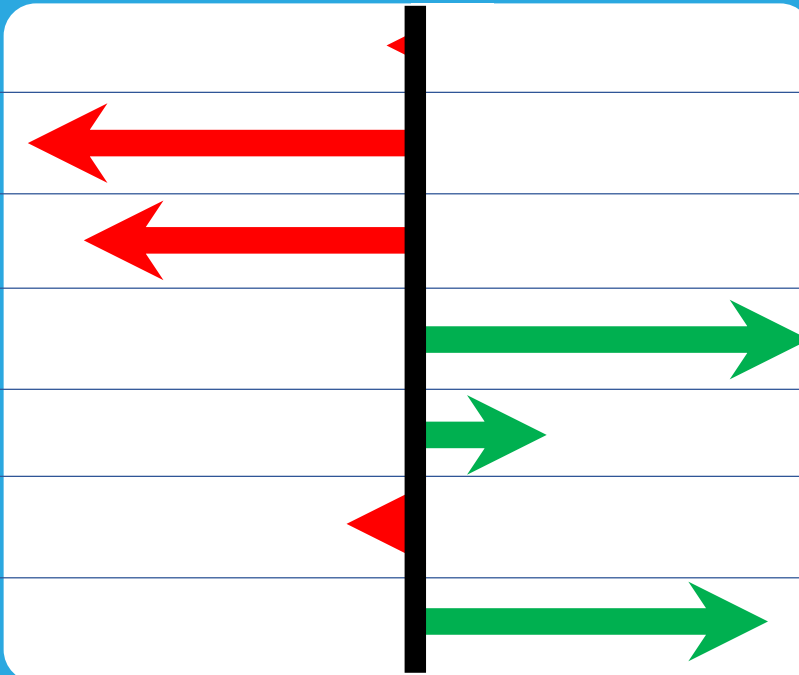
Open/Green Space

Alternatives to Driving

Equal Opportunity

Shorter Commutes

Public Service Costs

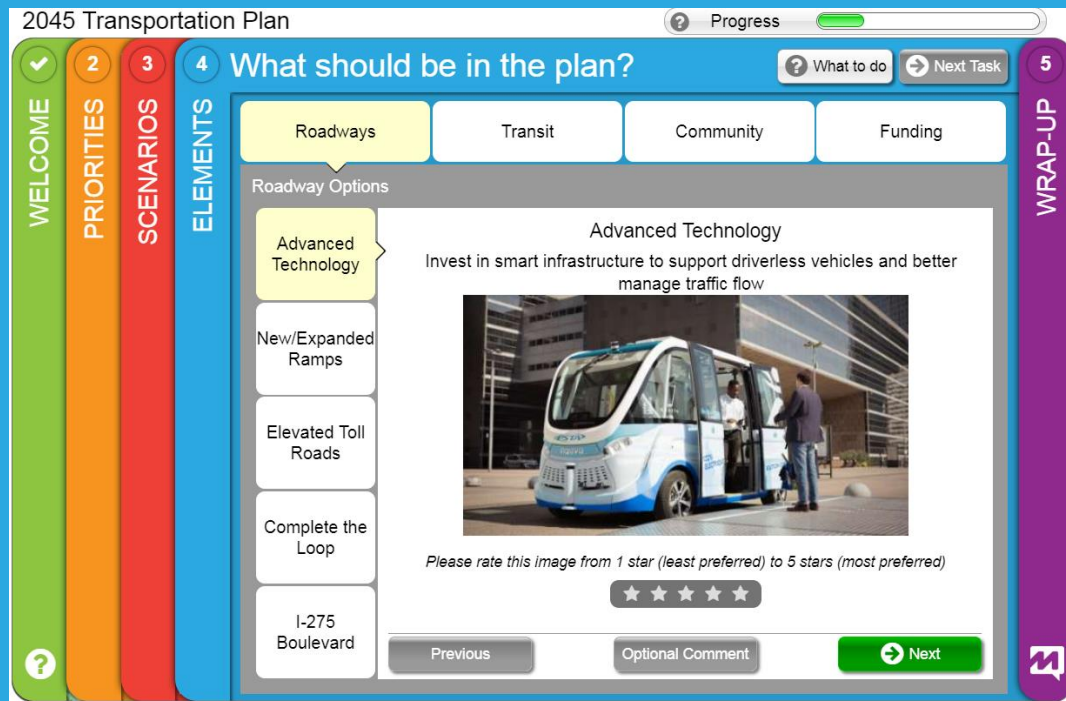




# 4. ELEMENTS

If you are completing the **online survey**, you should be on screen 4

If you are completing the **paper survey**, you should be at section 4



4. ELEMENTS		Rate the elements in each category. Circle your selection.									
ROADWAYS	Least Appealing			Most Appealing		COMMUNITY	Least Appealing			Most Appealing	
1. Advanced Technology	1	2	3	4	5	11. Expand Growth Area	1	2	3	4	5
2. New/Expanded Ramps	1	2	3	4	5	12. Preserve Neighborhoods	1	2	3	4	5
3. Elevated Toll Roads	1	2	3	4	5	13. More/Better Downtowns	1	2	3	4	5
4. Complete the Beltway Loop	1	2	3	4	5	14. Efficient Use of Land	1	2	3	4	5
5. I-275 Boulevard Conversion	1	2	3	4	5	15. Walk & Bike Focus	1	2	3	4	5
TRANSIT	Least Appealing			Most Appealing		FUNDING	Least Appealing			Most Appealing	
6. Expanded Ridesharing	1	2	3	4	5	16. New Lanes with Tolls	1	2	3	4	5
7. Express Bus & BRT Service	1	2	3	4	5	17. Taxes/Fees to Fund Roads	1	2	3	4	5
8. Rail Service	1	2	3	4	5	18. Taxes/Fees to Fund Buses	1	2	3	4	5
9. Water Ferry	1	2	3	4	5	19. Taxes/Fees to Fund Rail	1	2	3	4	5
10. Statewide Rail	1	2	3	4	5	20. Special District Fees	1	2	3	4	5
Comments: If you wish to provide comments on any of the elements please write the corresponding number and your comment below.											

# What Should Be in the Plan?

✓ **Roadway**

✓ **Transit**

✓ **Community**

✓ **Funding**

- Drill down into the ingredients that make up each of the scenarios
- Help determine what elements should be included in the hybrid scenario?

# Time to Vote!

## What to do on your survey

### Example Only

ROADWAYS	Least Appealing			Most Appealing	
1. Advanced Technology	1	2	3	4	5
2. New/Expanded Ramps	1	2	3	4	5
3. Elevated Toll Roads	1	2	3	4	5
4. Complete the Beltway Loop	1	2	3	4	5
5. I-275 Boulevard Conversion	1	2	3	4	5

# Time to Vote!

## What to do on your survey

### Example Only

If you have a comment on Elevated Toll Roads, enter the corresponding number (3) along with your comment in this box

#### 4. ELEMENTS

Rate the elements in each category.  
Circle your selection.

ROADWAYS	Least Appealing					Most Appealing					COMMUNITY	Least Appealing					Most Appealing				
1. Advanced Technology	1	2	3	4	5						11. Expand Growth Area	1	2	3	4	5					
2. New/Expanded Ramps	1	2	3	4	5						12. Preserve Neighborhoods	1	2	3	4	5					
3. Elevated Toll Roads	1	2	3	4	5						13. More/Better Downtowns	1	2	3	4	5					
4. Complete the Beltway Loop	1	2	3	4	5						14. Efficient Use of Land	1	2	3	4	5					
5. I-275 Boulevard Conversion	1	2	3	4	5						15. Walk & Bike Focus	1	2	3	4	5					
TRANSIT	Least Appealing					Most Appealing					FUNDING	Least Appealing					Most Appealing				
6. Expanded Ridesharing	1	2	3	4	5						16. New Lanes with Tolls	1	2	3	4	5					
7. Express Bus & BRT Service	1	2	3	4	5						17. Taxes/Fees to Fund Roads	1	2	3	4	5					
8. Rail Service	1	2	3	4	5						18. Taxes/Fees to Fund Buses	1	2	3	4	5					
9. Water Ferry	1	2	3	4	5						19. Taxes/Fees to Fund Rail	1	2	3	4	5					
10. Statewide Rail	1	2	3	4	5						20. Special District Fees	1	2	3	4	5					

Comments: If you wish to provide comments on any of the elements please write the corresponding number and your comment below.

**Enter comments here....**

Example: **#3** – “I like the idea of elevated toll roads...”

# Roadway Elements



Advanced Technology



Elevated Toll Roads



I-275 Boulevard



New/Expanded Ramps



Complete the Loop

# Rate This Element

## 1. Advanced Technology



- 1
- 2
- 3
- 4
- 5

Least  
Appealing

Most  
Appealing



Invest in smart infrastructure to support driverless vehicles and better manage traffic flow.

# Rate This Element

## 2. New/Expanded Ramps



Least  
Appealing

Most  
Appealing



Improve expressway ramps and new road connections to make it easier and safer to enter and exit.

# Rate This Element

## 3. Elevated Toll Roads



Least  
Appealing

Most  
Appealing



Expressways with limited entry points provide reliable travel times and less delay.



# Rate This Element

## 4. Complete the Beltway Loop



Least  
Appealing

Most  
Appealing



New toll road in Pasco connecting I-75 to McMullen-Booth Road in Pinellas provides another travel route around the region.

# Rate This Element

## 5. I-275 Boulevard Conversion



①   ②   ③   ④   ⑤  
Least                      Most  
Appealing                      Appealing



Convert I-275 north of downtown Tampa to a street-level boulevard to reconnect Tampa's core neighborhoods.

# Transit Elements



Expanded Ridesharing



Rail Service



Statewide Rail



Express Bus & BRT  
Service



Water Ferry

# Rate This Element

## 6. Expanded Ridesharing



Least  
Appealing

Most  
Appealing



Encourage more rideshare options (e.g. Uber/Lyft) to travel without having to own a car while improving connections to transit.

# Rate this Element

## 7. Express Bus & BRT Service



Least  
Appealing

Most  
Appealing



Make express bus service more frequent and run some buses in their own lanes (Bus Rapid Transit).

# Rate This Element

## 8. Rail Service



Least  
Appealing

Most  
Appealing



Use mostly existing rail lines, and some new rail connections along major roads, to provide regional rail service.

# Rate This Element

## 9. Water Ferry



Least  
Appealing

Most  
Appealing



Connect the  
downtowns of Tampa  
and St. Petersburg,  
and MacDill AFB and  
South Hillsborough.

# Rate This Element

## 10. Statewide Rail



- 1
- 2
- 3
- 4
- 5

Least  
Appealing

Most  
Appealing



Connect the Tampa Bay region to Orlando and other regions around Florida.



# Community Elements



Expanded Growth Area



More/Better Downtowns



Walk & Bike Focus



Preserve Neighborhoods



Efficient Use of Land

# Rate This Element

## 11. Expanded Growth Area



1

Least  
Appealing

2

3

4

5

Most  
Appealing



Development expands outward, including growing into rural areas.

# Rate This Element

## 12. Preserve Neighborhoods



Least  
Appealing

Most  
Appealing



Revitalize older neighborhoods in cities and suburbs, and promote reinvestment.

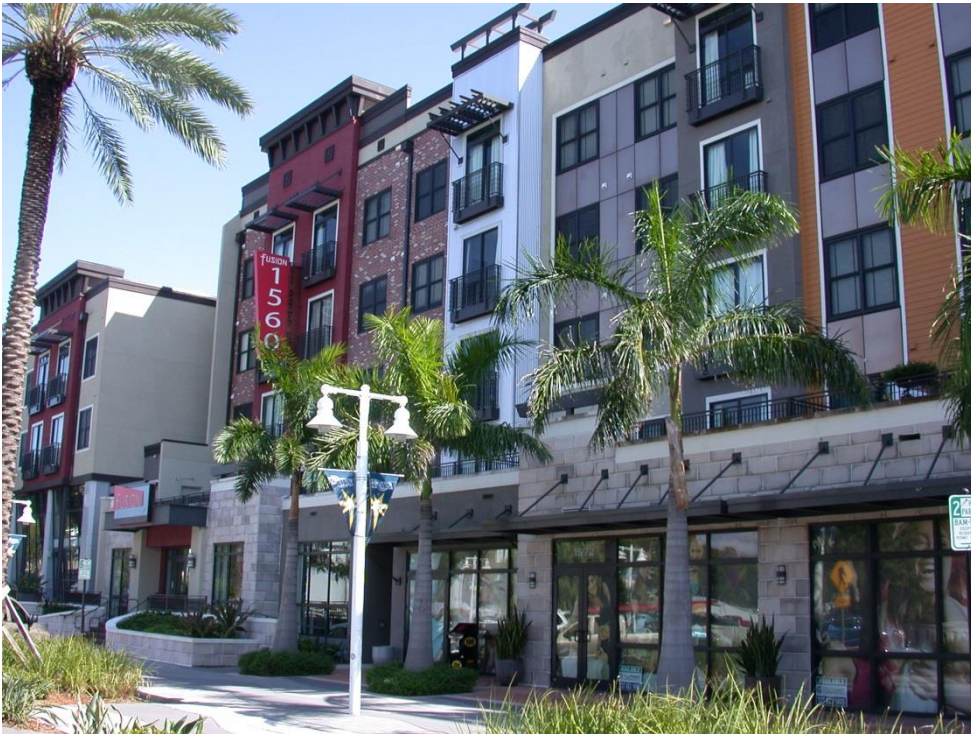
# Rate This Element

## 13. More/Better Downtowns



Least  
Appealing

Most  
Appealing



**Revitalize  
commercial districts  
with a mix of mid-rise  
and high-rise office  
and housing options  
near transit stations.**

# Rate This Element

## 14. Efficient Use of Land



Least  
Appealing

Most  
Appealing



New construction is higher density – such as, more Main Streets and townhomes – allowing more gradual planned expansion into rural lands.

# Rate This Element

## 15. Walk & Bike Focus



Least  
Appealing

Most  
Appealing



Sidewalks and bike lanes provide more connections to transit and neighborhoods.

# Funding Elements



**New Lanes with Tolls**



**Taxes/Fees to fund Buses**



**Special District Fees**



**Taxes/Fees to fund Roads**



**Taxes/Fees to fund Rail**

# Rate This Element

## 16. New Lanes with Tolls



Least  
Appealing

Most  
Appealing



Build new express lanes with variable tolls to manage traffic flow.



# Rate This Element

## 17. Taxes/Fees to Fund Roads



1

Least  
Appealing

2

3

4

5

Most  
Appealing



Raise local taxes  
and/or fees to build  
more roadway  
projects.

# Rate This Element

## 18. Taxes/Fees to Fund Buses



Least  
Appealing

Most  
Appealing



Raise local taxes  
and/or fees to  
improve local and  
regional bus  
service.

# Rate This Element

## 19. Taxes/Fees to Fund Rail



Least  
Appealing

Most  
Appealing



Raise local taxes  
and/or fees to build  
a regional rail  
system.

# Rate This Element

## 20. Special District Fees



Least  
Appealing

Most  
Appealing



Developers and/or local property owners pay fees/taxes for community improvements in designated areas.

# You're Almost Done!

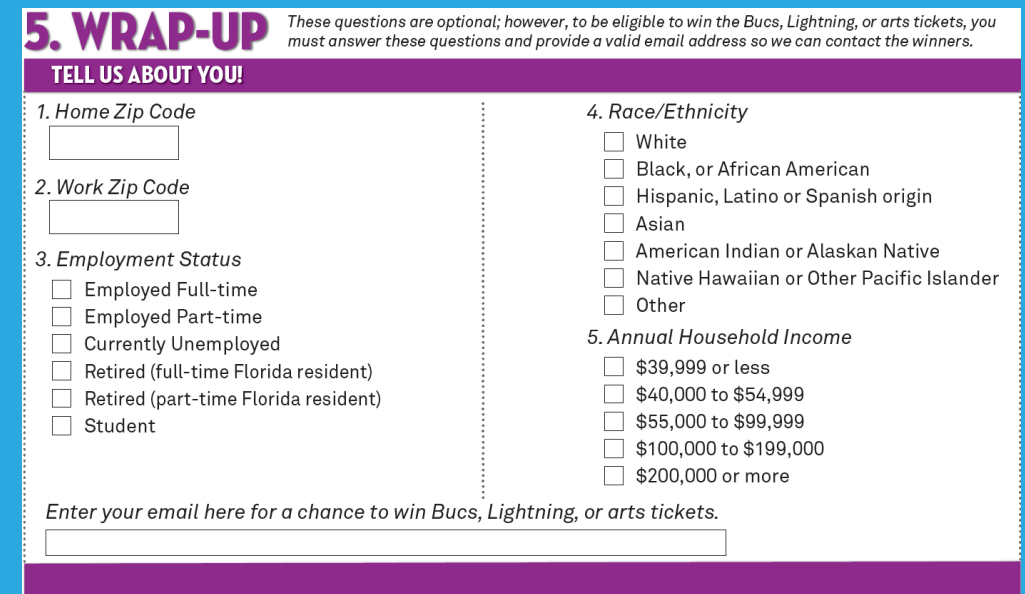
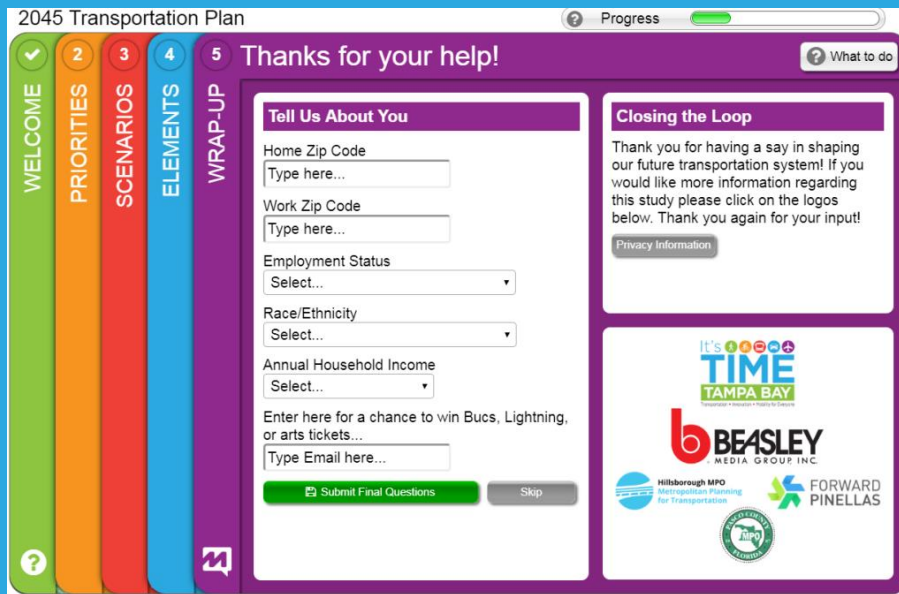
## Would you like a chance to win tickets?



# 5. WRAP-UP

If you are completing the **online survey**, you should be on screen 5

If you are completing the **paper survey**, you should be at section 5



These questions are optional; however, to be eligible to win the Bucs, Lightning, or arts tickets, you must answer these questions and provide a valid email address so we can contact the winners.

# Thank You!

## Encourage Others to Weigh In

[itstimetampabay.org](http://itstimetampabay.org)

