

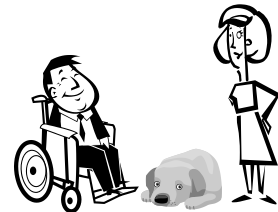
The research group at the School of Veterinary Medicine, University of California, Davis needs help from service/pet dog partners and their family members.

Influences of service dogs and pet dogs for people living with disabilities and their family members, as compared with those who have no dog.

We would appreciate it if you could join and/or inform your friends about this web-based study.

Who can participate? (You have to be 18+ years of age)

1. People who have disabilities other than visual or hearing disabilities
Both service/pet dog owners and non-dog owners.
2. Family members of service dog partners.



How to participate?

You can answer the survey from the following URL:

1. For people with disabilities (<http://www.surveymonkey.com/s/RQYZNHC>)
2. For caregivers of service dog partners (<http://www.surveymonkey.com/s/RMQJ6PV>)



The survey is voluntary and anonymous, and has been approved by the University of California Davis' Institutional Review Board (IRB).

Thank you very much for your help in this study!!!

If you have any questions, please contact:

Mariko Yamamoto Ph.D.(maryamamoto@ucdavis.edu)