



Safe Start 2.0 – What's Next?

Cafés, Merchandise Display, Vending

Photo source: Eater Seattle

Our vision, mission, and core values

Vision: Seattle is a thriving equitable community powered by dependable transportation

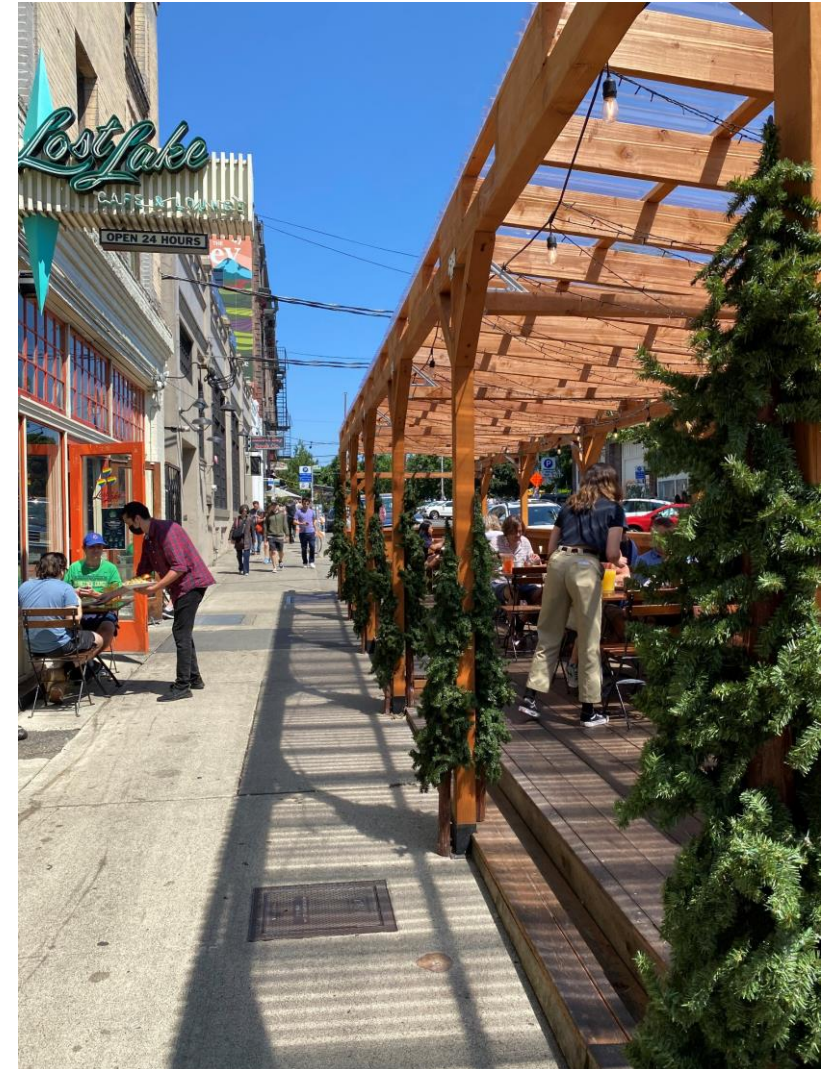
Mission: to deliver a transportation system that provides safe and affordable access to places and opportunities

Committed to **6 core values:**

- Equity
- Safety
- Mobility
- Sustainability
- Livability
- Excellence

Presentation overview

- Brief Program History
- COVID-19 and Safe Start 1.0
- Safe Start 2.0 Process and Update
- Questions and Feedback



Public Space Management (PSM)

- We work with residents, businesses, and organizations to enhance neighborhoods, strengthen communities, enliven public spaces, and promote economic vitality
- Program areas include:
 - People Streets
 - Business Enhancements
 - Vending
 - Vibrant Communities
 - Shoreline Street Ends



Pre COVID-19

- Existing programs and permit options for cafes, streateries, merchandise display, and vending
 - 420 cafes, including eight streateries
 - 115 vendors
 - 20 merchandise displays
- Permit costs vary between \$300-\$4,000 annually



COVID-19 and Safe Start 1.0

- Began in Summer 2020
- Streamlined & free permits until May 2022
- New types & locations for vending, temporary fencing and designs allowed, additional use of the curb space and street closures
- To date, we have issued 260 Safe Start permits



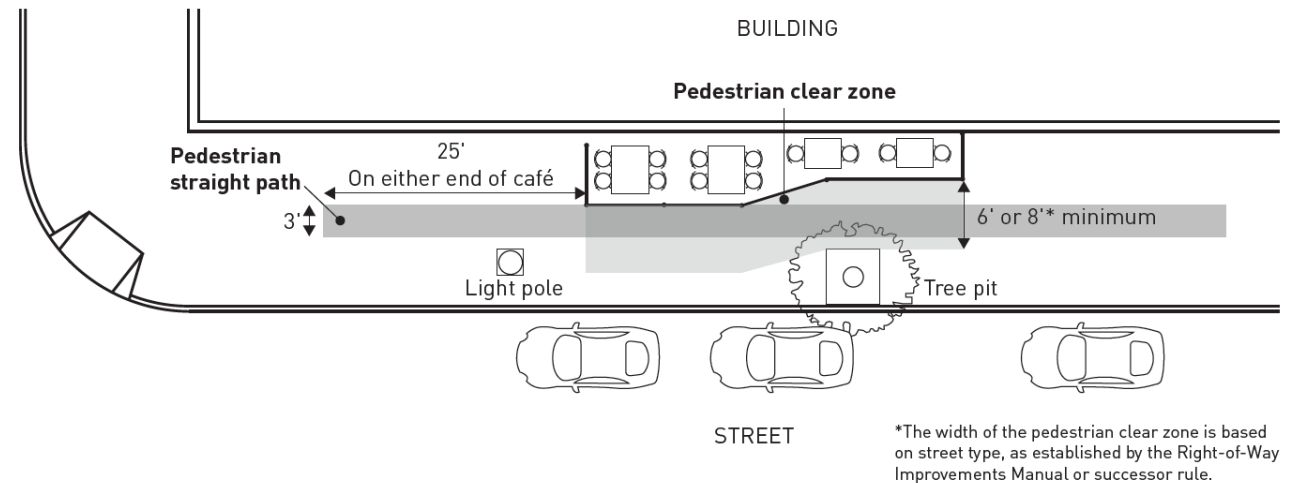
Safe Start 2.0 Process and Update

- **Phase 1 (July – August)**
 - Survey
 - Permit Holders
 - Other Business Owners
 - General Public
 - Community Conversations
- **Phase 2 (August – October)**
 - Phase 1 evaluation
 - Expanded Community Conversations
- **Phase 3 (November – December)**
 - Develop Draft Plan
 - Present draft to City Council and community partners
- **Phase 4 (Q1 2022)**
 - Develop Final Plan and perform SEPA analysis if necessary
 - Final Plan and Legislation to City Council



Current Sidewalk Café Regulations

- 6-to-8-foot minimum clear sidewalk width
- 3-foot minimum straight pedestrian path (if clear path is not straight)
- 8-foot minimum overhead clearance for weather protection.
- Cane-detectable diverters required for sidewalk cafes without table service
- Deviations allowed in certain locations during COVID



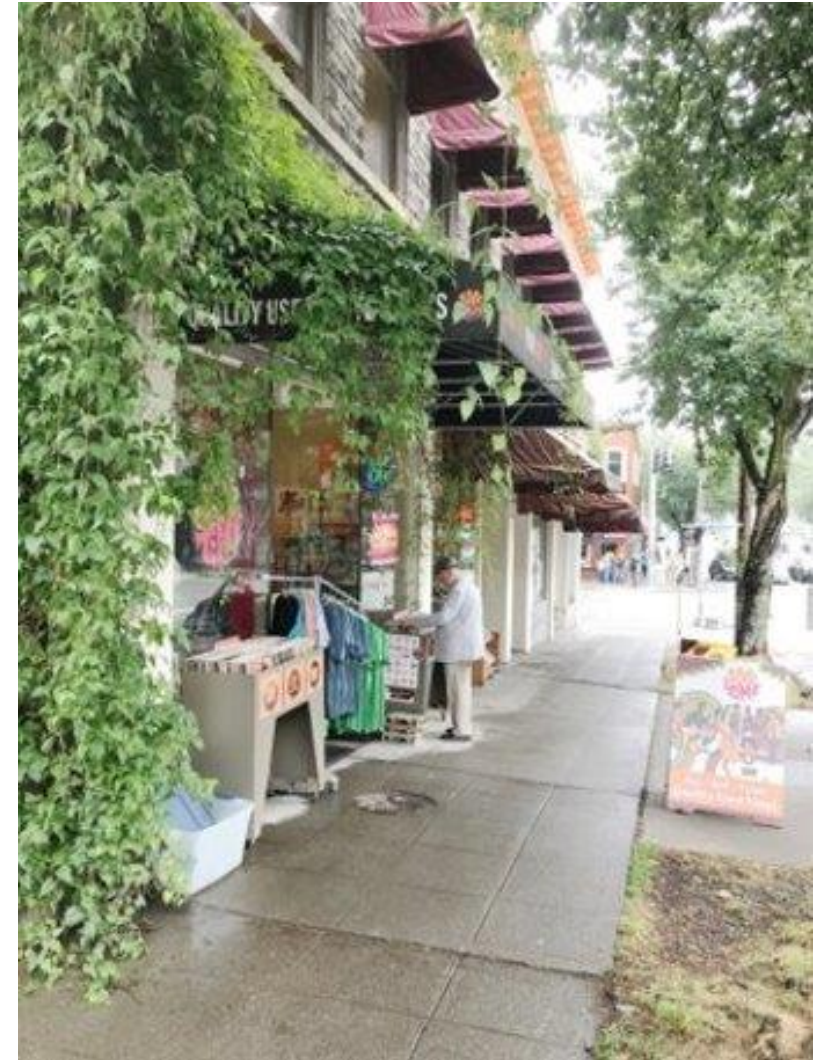
Questions and Prompts

Right of Way Priority

- How do we balance access needs and vibrancy?
- What are the issues facing blind and low-vision pedestrians?

Fees

- How do we value and charge for space in the right of way?



Questions?

joel.miller@seattle.gov | (206) 200-6357

www.seattle.gov/transportation/permits-and-services/permits/temporary-permits

www.seattle.gov/transportation

