



# What You Need to Know About Earning Money and Supplemental Security Income (SSI)

Your income and resources, including money you earn working and your savings, affect the amount of your SSI check each month. Social Security offers work incentives to help you increase your income. Work incentives may allow us to exclude some of your income and give you the opportunity to continue receiving SSI while you work.

For example, you may use work incentives to increase your overall income while working during your summer breaks, on the weekends, or after school. If you are a student receiving special education services, you can also incorporate work incentives for SSI into your Individual Education Plan (IEP) and Transition Plan.

Information about our work incentives is available online at [www.ssa.gov/redbook](http://www.ssa.gov/redbook). The specific work incentives available to you depend on your situation, income, and type of benefits.

## Examples of Work Incentives

The General Earned Income Exclusion allows most SSI recipients to exclude from countable income the first \$65 of earnings plus 1/2 of additional earnings.

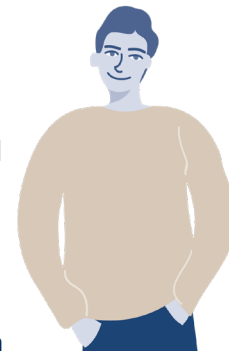
The Student Earned Income Exclusion (SEIE) allows recipients who are students to exclude a certain amount of earnings from their countable income. In 2023, we did not count \$2,220 of income in a month or \$8,950 in a year. SEIE eligibility ends when a recipient turns age 22.

## Meet Donnell and find out how Work Incentives helped him reach his goals

Donnell is 15 years old, has an intellectual disability, and loves video games.

He talked to his case manager about working for a local video game store this summer. Donnell asked:

**“What happens to my SSI payments when I work during the summer?”**



Donnell’s case manager explained how Donnell could use the SEIE while continuing to receive the SSI cash payments.

With the SEIE, in 2023, we did not count \$2,220 of income in a month or \$8,950 in a year. This means that earnings up to those limits did not change Donnell’s SSI payment amounts.

With Donnell’s question answered, he decides to work 20 hours a week during his summer break from school.

## Additional Support with Understanding Work Incentives

### *Work Incentives Planning and Assistance (WIPA)*

Beginning when you turn age 14, WIPA projects provide information and benefits counseling to help you understand how work and earnings can affect your benefits. To learn more about work incentives—and to locate the WIPA project serving your area, contact the Ticket to Work Help Line at **1-866-968-7842** (TTY **1-866-833-2967**) Monday through Friday from 8:00 a.m. to 8:00 p.m., ET. Visit <https://choosework.ssa.gov/findhelp> to find information on WIPA projects.

You can find additional information and resources to make a successful transition to adulthood at [www.ssa.gov/youth/](http://www.ssa.gov/youth/)



Securing today and tomorrow

**SSA.gov** |     

Publication No. 64-121 | January 2023 (Recycle prior editions)  
What You Need to Know About Earning Money and Supplemental Security Income (SSI)  
Produced and published at U.S. taxpayer expense