



A Stimulating Place to Learn...

In PWCS, we are focused on doing whatever it takes to ensure that each of our 87,000 students learns as a result of quality, engaging instruction steeped in research and best practices, a caring & safe environment, relevancy, and targeted differentiation.

...a Rewarding Place to Work

Our educators and students achieve continuous growth through collaboration, a rich & rigorous curriculum, and a leading standards-based supervision & evaluation system.



14715 BRISTOW ROAD, MANASSAS, VA 20112
WWW.PWCS.EDU

School Board

Mr. Milton C. Johns
Chairman At-Large

Mrs. Alyson A. Satterwhite
Vice Chairman
Gainesville District

Mrs. Lisa E. Bell
Neabsco District

Mrs. Betty D. Covington
Potomac District

Mrs. Lillie G. Jessie
Occoquan District

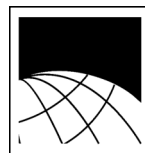
Dr. Michael I. Otaigbe
Coles District

Mr. Gil Trenum
Brentsville District

Ms. Loree Y. Williams
Woodbridge District

Superintendent of Schools

Dr. Steven L. Walts



Prince William County
PUBLIC SCHOOLS
Providing A World-Class Education

Prince William County Public Schools (PWCS) does not discriminate in employment or in its educational programs and activities against qualified individuals on the basis of race, color, religion, national origin, sex, pregnancy, childbirth or related medical conditions, age, marital status, veteran status, or disability. PWCS provides equal access to the Boy Scouts and other designated youth groups. The following individual will handle inquiries regarding nondiscrimination policies, including Section 504 and Title IX:
Associate Superintendent for Human Resources
Prince William County Public Schools, P.O. Box 389, Manassas, VA 20108

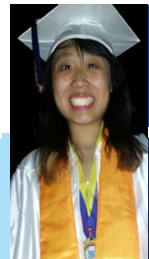
OPPORTUNITY



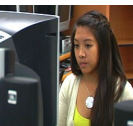
LEADERSHIP



DIVERSITY



EXCELLENCE



Prince William County
PUBLIC SCHOOLS
Providing A World-Class Education

IN NORTHERN VIRGINIA

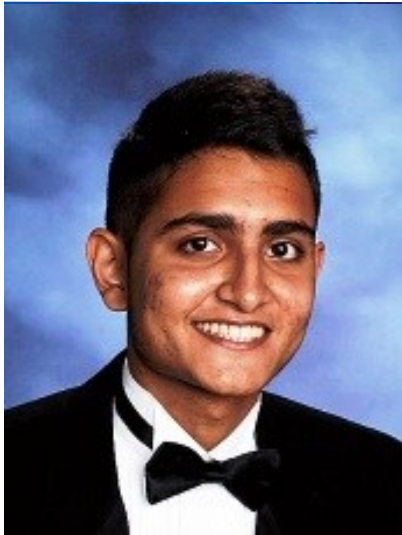


... that it is the responsibility of the School Division to teach children
 ... in the value of the individual

WE BELIEVE...

... that every individual can learn
 ... that decision-making is best done through a collaborative process
 ... in diversity

... that the School Division is governed through a representative process
 ... in the commitment of the School Division to all employees



The unique, collaborative PWCS Connect Induction System



Provides a multi-tiered system of educator support at School and School Division levels including:

- * Mentorship and coaching
- * Team support
- * Professional Learning at the School and Division level
- * Networking opportunities



Prince William County Schools hires continuously. To be considered for certified positions, applicants must be *eligible* for certification in Virginia or another state prior to the start of the school year. Applicants *do not* need to have completed their education program or hold a teaching certificate prior to applying for employment.

APPLY NOW!

While not required prior to applying, candidates may wish to complete the Virginia PRAXIS II which is required for employment in Title I schools. It will also make you eligible for consideration in a greater number of schools and positions.

pwcs.humanresources.schoolfusion.us
recruit@pwcs.edu

WORLD-CLASS COMMUNITIES

- *35 miles from Washington, D.C.
- *One of America's Top 100 Communities for Young People for Three Consecutive Years (America's Promise Alliance & ING)
- *#1 Best City for Young Families in Virginia (NerdWallet)
- *History, recreation, entertainment, shopping
- *Growing business community

WORLD-CLASS SCHOOLS WORLD-CLASS EDUCATORS

- *Specialty Programs at Every Level, including all middle and high schools
- *Robotics in Every School
- *Instructional Technology
- *Ongoing School Renovation and Refreshment
- *New Elementary and High School in 2015-16
- *High Achievement and Graduation Rates
- *Extensive Professional Growth & Learning
- *Professional Learning Communities
- *Baldridge in Education
- *National Board Certification Stipend
- *Growing Our Own Programs
- *98 Unique Learning & Work Environments

WORLD-CLASS OPPORTUNITIES

- *Tuition Reimbursement
- *Retirement Contribution Matching
- *Add-on Endorsement Cohorts
- *Teacher Leadership
- *Multiple Career Pathways
- *Award-Winning Programming
- *Leading Educator Induction Programs